

## Two become one – Backup and Archive with Archiware P5

msm studios combines two existing data management systems into one with Archiware P5, exemplifying the benefits of one solution to cover all data management requirements.

**msm studios** (Mastering Studios München) is a post-production and mastering service provider for the audio and video industry. They have pioneered many technologies in their field, often being the first to implement them in their workflow. Collaborating closely with the hardware and software vendors, msm have often helped to advance development.

**Archiware** is a software development company specializing in data management and security. The Archiware P5 product suite provides cloning, backup and archive functionalities. P5 Archive, the most feature-rich module, is even suited as a basic MAM solution, including metadata and previews for archived media.

msm has been using Archiware software since 2004 to protect data on their shared storage with an automatic Backup. Additionally, they have built an Archive of all completed projects for references and repurposing.

But it was one specific project which triggered a new look at the capabilities of P5 Archive: msm took on the task of digitizing the complete video archive of nature filmmaker and producer Gogol Lobmayr in HD in 2009.

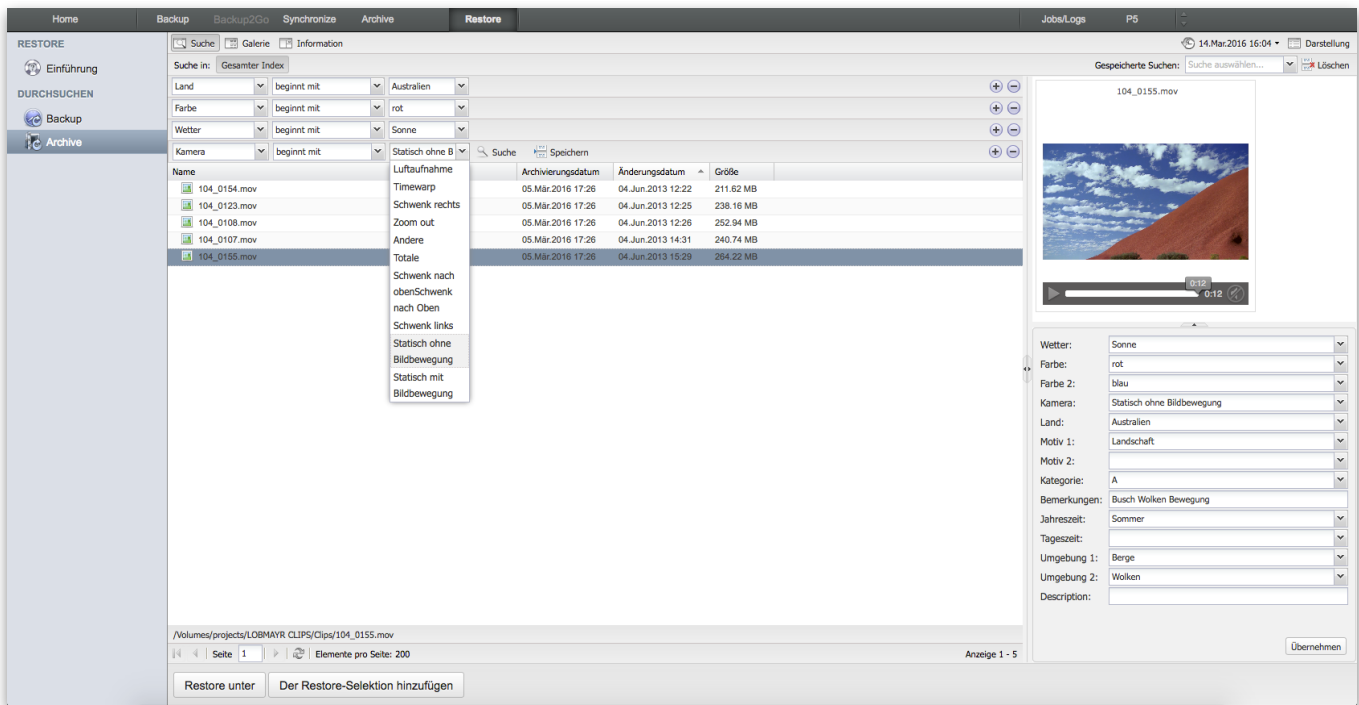
The resulting 80 hours of footage in 6400 clips and the corresponding metadata were all kept in Final Cut Server. Several hundred music video clips have already been produced using this material. And with Final Cut Server being discontinued, it was time to transfer the data and metadata into an up-to-date media asset management system.

However, a closer look revealed that P5 Archive already delivered all necessary features to keep the existing metadata and provide easy access:

- Full-length preview clips offer immediate impressions of the material
- Metadata can be stored in text fields or drop-down menus
- Combined searches in P5 Archive make finding the right clips easy

” *The integration of the Lobmayr Archive in the existing Archiware landscape makes a lot of sense for us. All of the originally created metadata were carried over smoothly and are available for searching. Now we only have one system for Backup, archived projects and media asset management. Usability and administration with Archiware is very easy.* ”

**Stefan Bock, owner, msm studios**



Metadata fields, combined search and previews in Archiware P5 Archive

For the migration, msm contracted **moosystems** because of their extensive experience of Final Cut Server migrations and Archiware P5. During the migration, all existing metadata from Final Cut Server was transferred to Archiware P5 Archive.

As an additional benefit, the number of systems managing the media was reduced, since Archiware P5 now handles Backup, the project Archive and the specific Lobmayr Archive in a single application.  
<http://www.fascinatingnature.com>

**About moosystems:**

moosystems designs video production systems and provides data migration services from existing to new systems. They build custom MAM and workflow solutions, including encoding, data storage, AWS connection, powerful searches and video previews.

moosystems  
 André Aulich  
 Hanauer Weg 41  
 41564 Kaarst, Germany  
 Phone +49 173 25 17 719  
 andre@moosystems.com  
<https://moosystems.com>

**About msm:**

msm-studios is a premium service provider for audio/video post-production and Blu-ray- /DVD authoring. The experts at msm-studios have a comprehensive understanding and the right sensitivity for music and also film productions. The list of clients includes EMI Classics, LSO, Metropolitan Opera, Sony Music, Universal Music, Virgin Classics, Warner Classics and ECM.

msm studio group Ltd.  
 Theresienstr. 27  
 D-80333 Munich, Germany  
 Tel. +49(89) 28 66 92-33  
 Fax +49(89) 28 66 92-53  
[www.msm-studios.com](http://www.msm-studios.com)



**P5 Archive**  
 Migrate data offline  
 to disk, tape or cloud



**P5 Backup**  
 Back up server data  
 to disk or LTO tape



**Tandberg Data**  
 T40 LTO Library

Options, Configurations, Interfaces...

We are happy to advise: [www.archiware.com](http://www.archiware.com) [sales@archiware.com](mailto:sales@archiware.com)

**ARCHIWARE**

