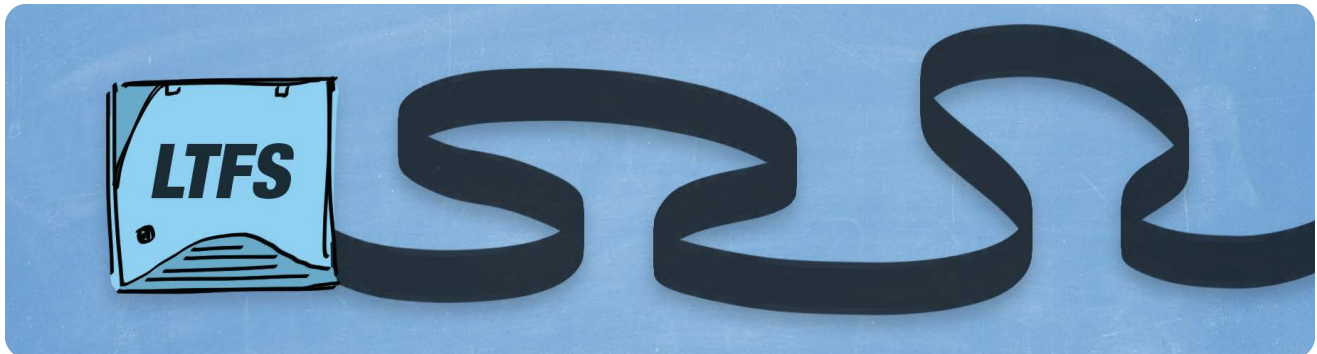


Archiware P5: Technical Guide

P5 Archive with LTFS

Step-by-step configuration of P5 Archive



More guides like this one available here:

[archiware.com/
manuals](https://www.archiware.com/manuals)

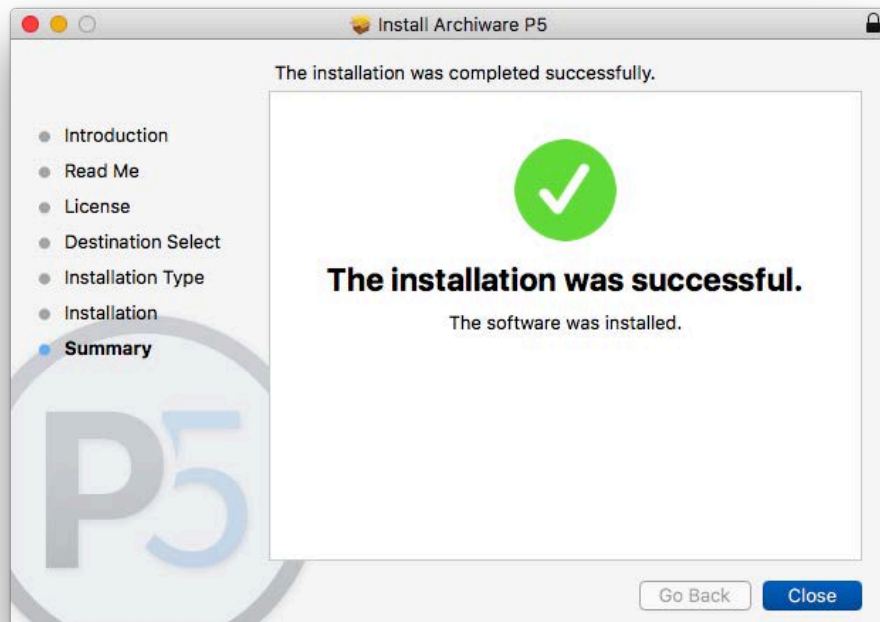
In this technical guide we install Archiware P5 on macOS, and add a stand-alone LTO drive, label a tape using the LTFS tape format and create an 'Archive Plan' ready for selection of data to be archived to the tape.

Download installer

<https://www.archiware.com/download-p5>



Run Installer until completed.

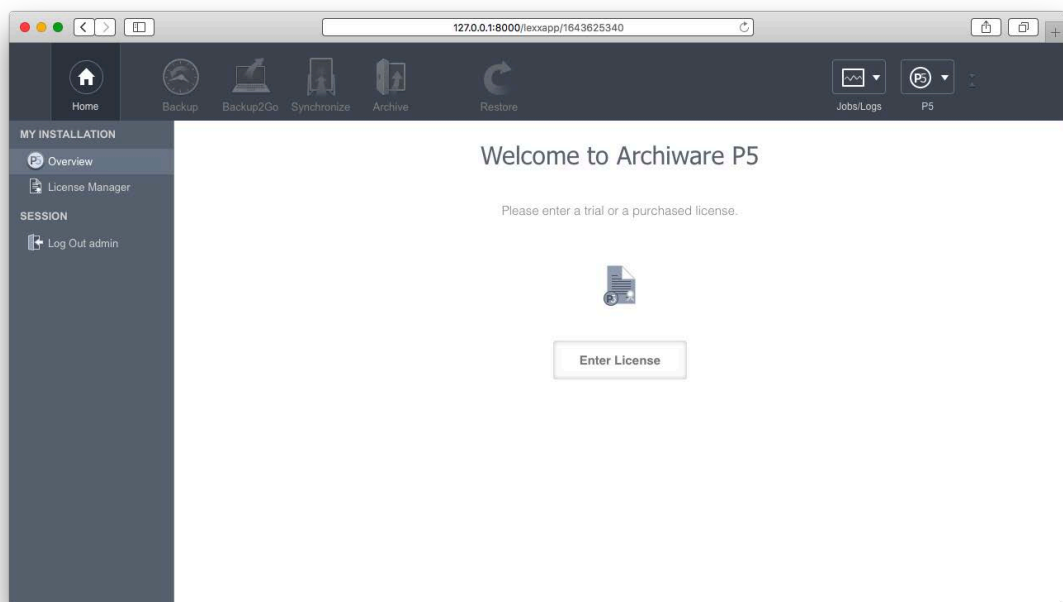


P5 starts and opens automatically in the browser.

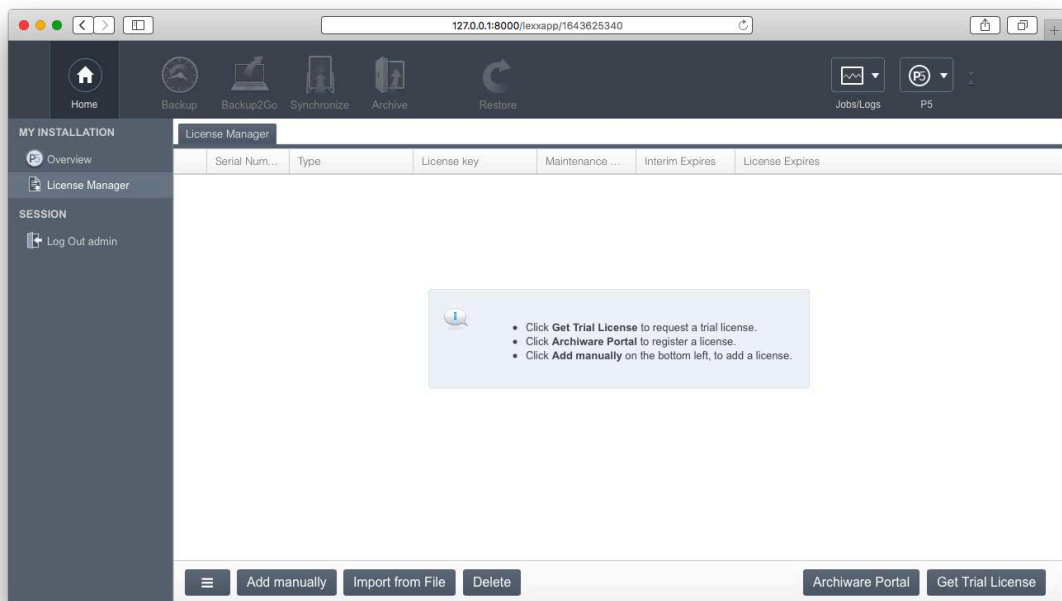


Begin with default user admin and password admin.

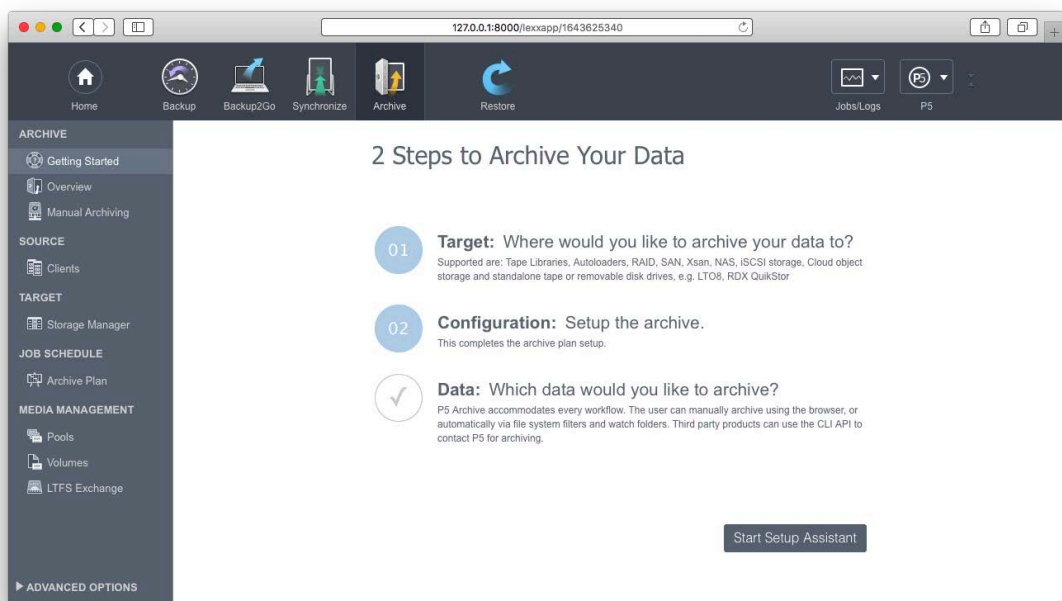
Enter License



Or request trial license within the P5 interface.



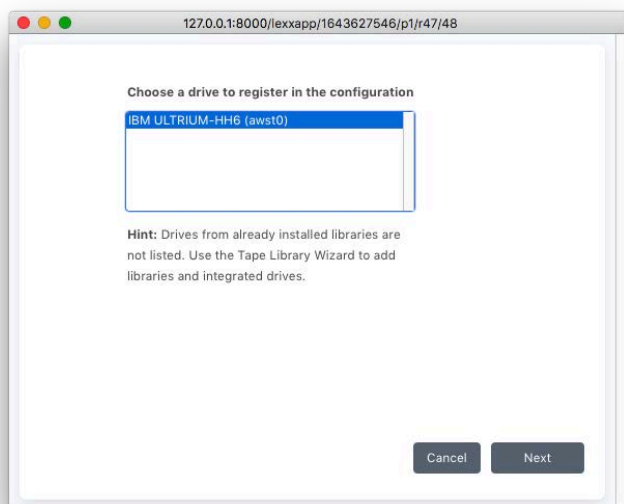
Select **Archive** in the top row.



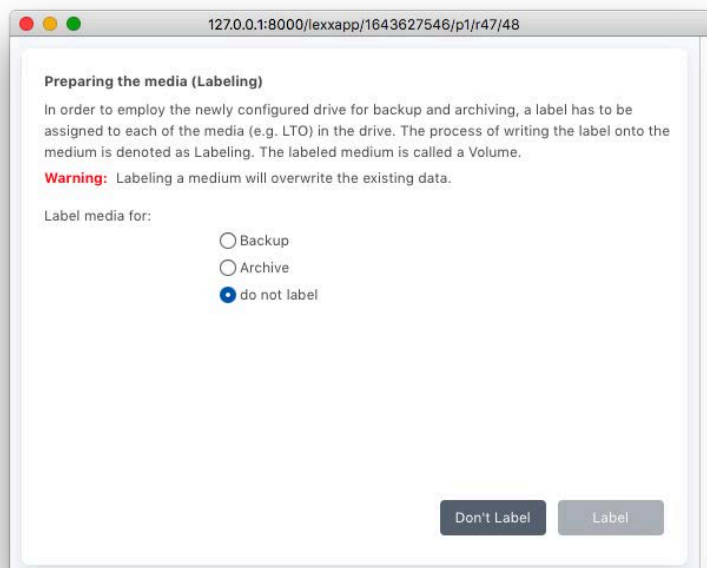
Select **Storage Manager** in the left column.

Select tape drive tab.

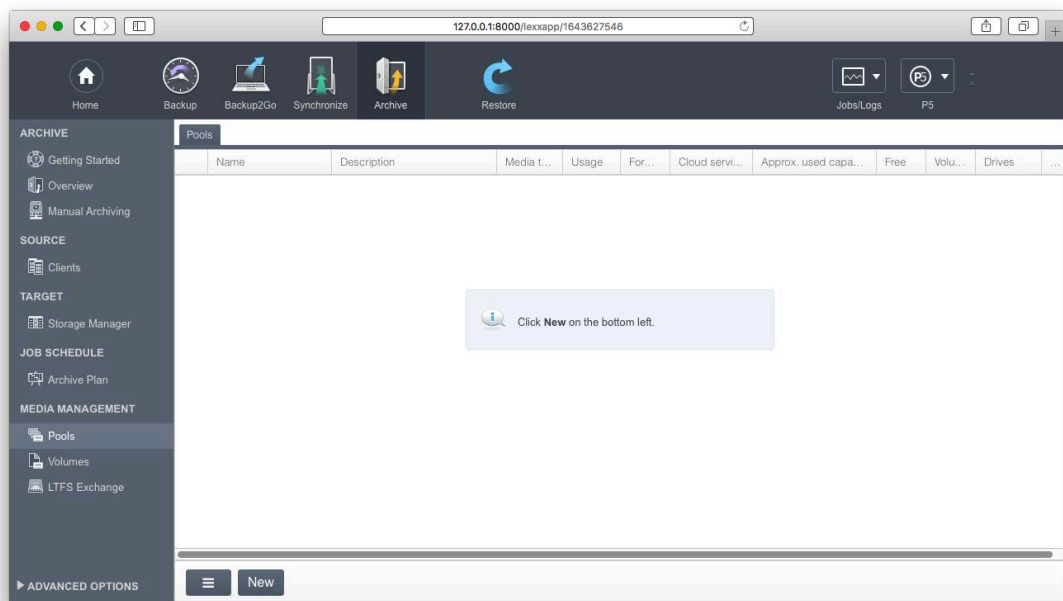
Select **New Tape Drive** to connect the LTO drive (powered on and visible in the OS, driver might be required depending on brand and model).



DO NOT LABEL IN THIS DIALOG IF YOUR WANT TO USE LTFS FORMAT.



Once the drive is connected within P5 go to **Pools** in the left column.



Select **New** to create a new storage Pool (that will hold all the tapes that will be written later).

Name the Pool.

For an Archive using LTFS format select **LTFS**.

127.0.0.1:8000/lexapp/1643627546/p1/r/47/48

General Setup Legacy Setup Mode Additional Options Expert Settings

Pool	Description	Status
ArchiveLTFS		Enabled

Usage

A pool is a storage destination for backup and archive data. Tape and disk based pools contain multiple volumes of a fixed size. Container based pools consist of a single volume that can grow flexibly. Depending on the storage medium used, there are three volume types. [More/less ...](#)

Use for: Archive

Media type: Tape

LTO recording format: P5 native LTFS ⓘ

Note: These parameters may only be modified while no volumes have been created.

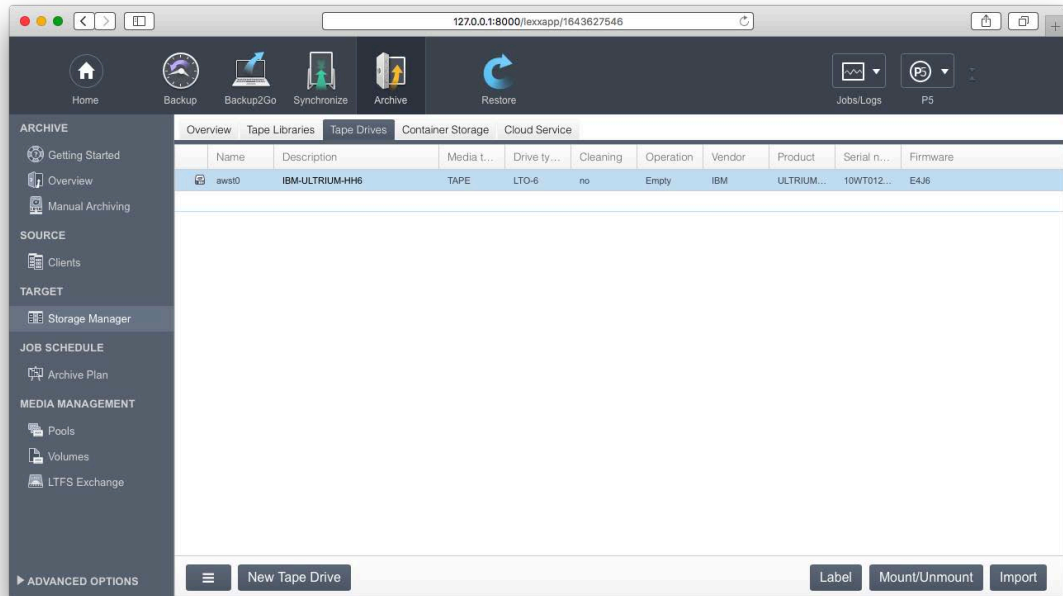
Drives

Use listed drives only:

Drive name:

After the Pool is created a tape has to be labeled.

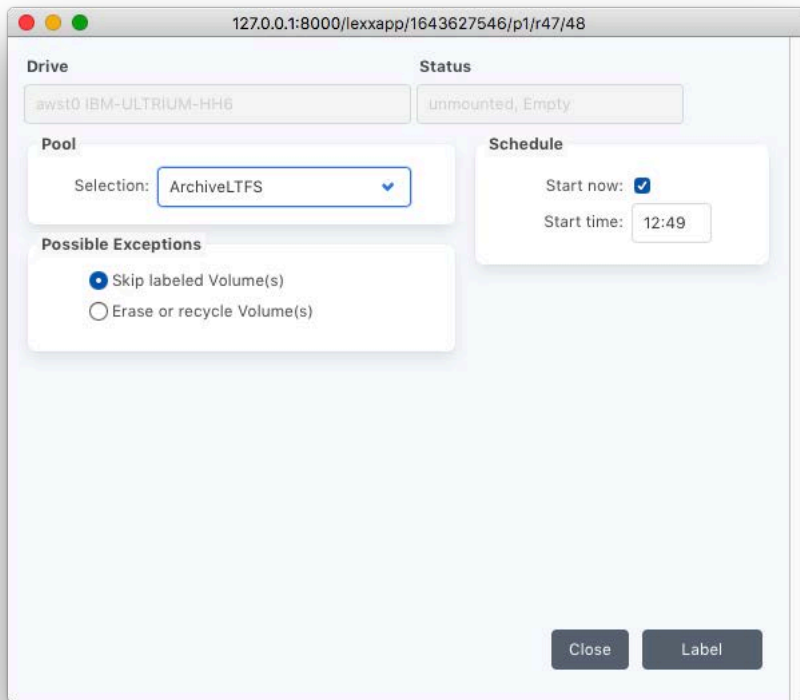
Go to **Storage Manager** select LTO drive and **Label** (bottom of P5 interface).



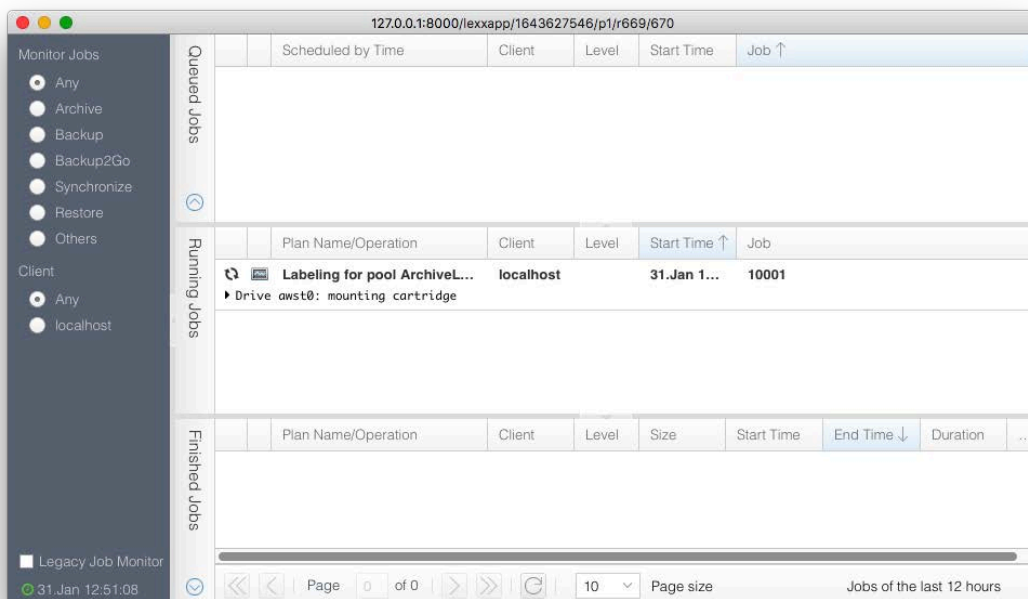
Select the Drive your just created.

Select **Label**.

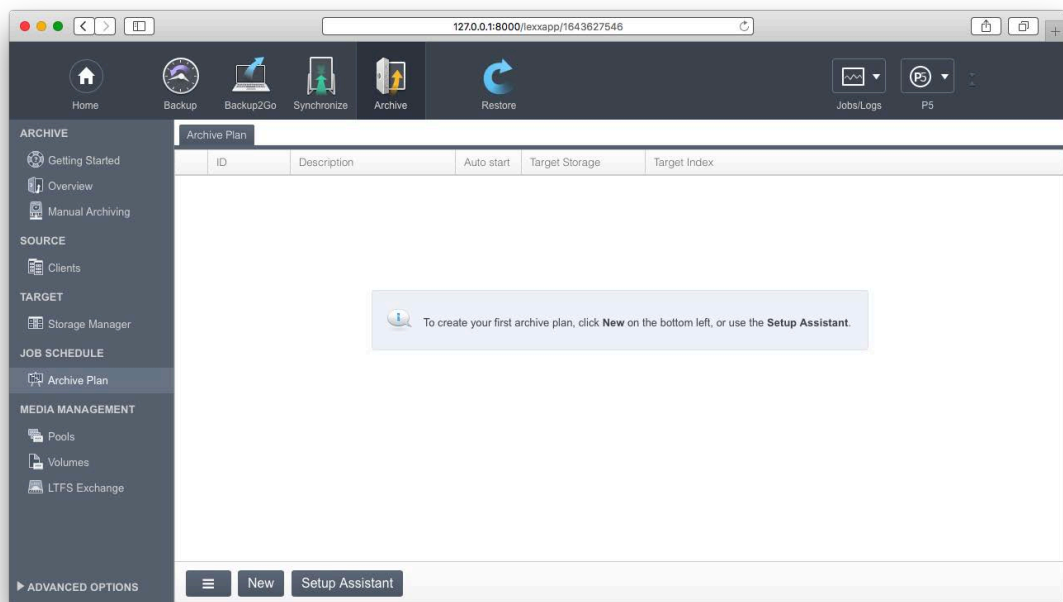
Attention: Labelling ERASES all data on the tape.



You can watch the progress in the Job Monitor.

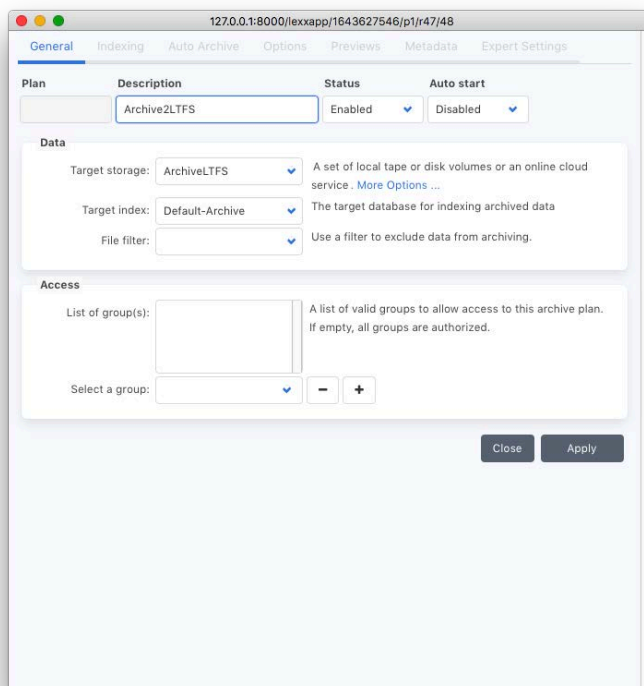


When done go to **Archive Plan** in the left column and select **New**.

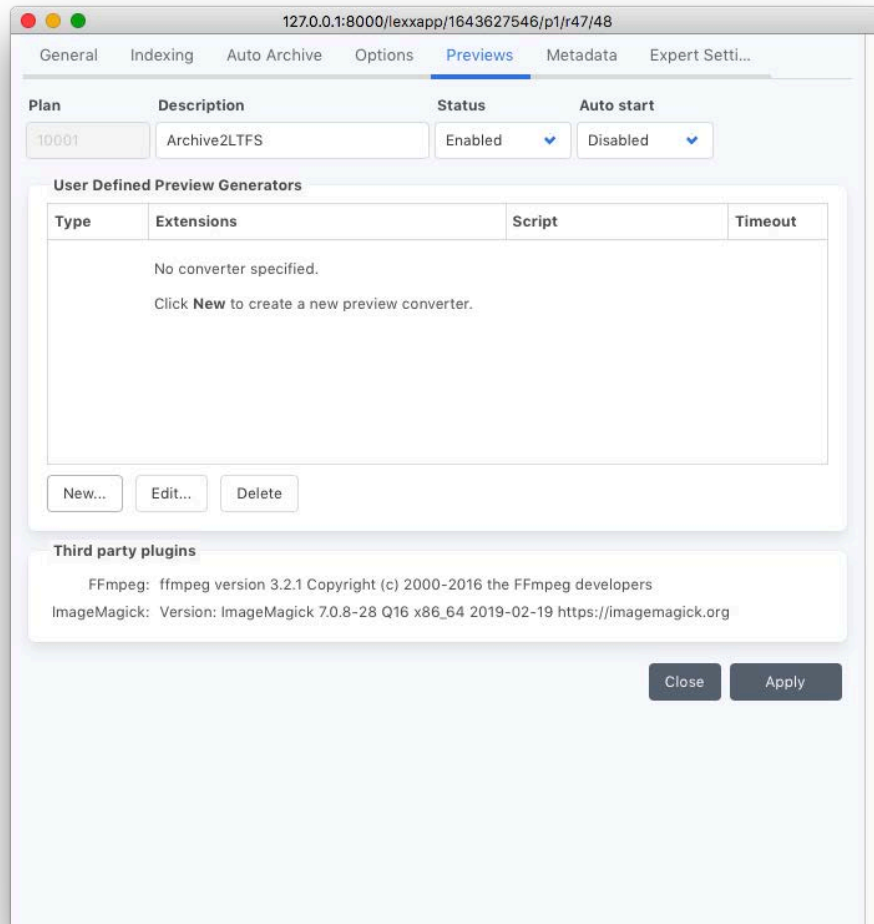


Select Target Storage Pool (the Pool you just created) to write to.

For preview and metadata options see the manual on page 226 (the manual can be reached from the P5 Menu in the upper right corner).



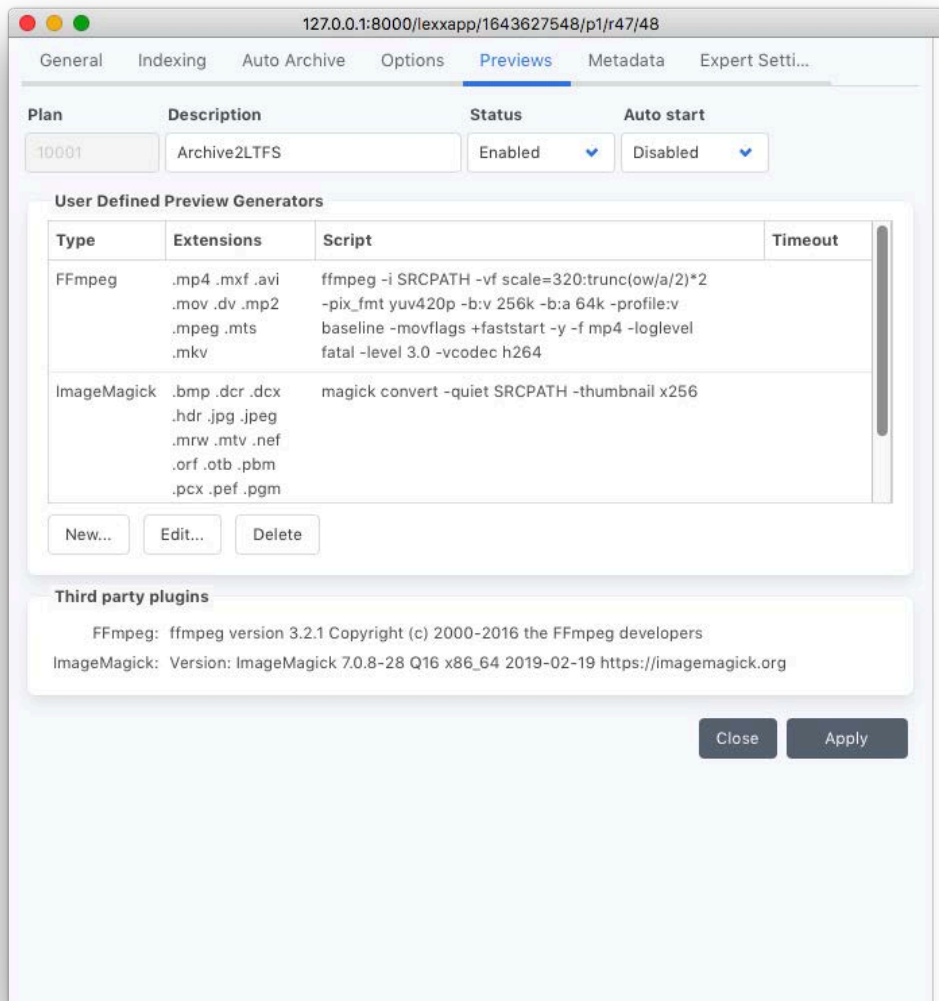
If you want to see thumbnails and proxy clips in the archive index you need to configure them in the archive plan.



Select **New** followed by ffmpeg for video proxy clips. You can either take the default settings or change according to your needs.

Repeat step selecting ImageMagick for still image thumbnails.

When configured it should look like this.



For the metadata import option see here:

<https://www.archiware.com/sample-scripts/importing-metadata-p5-archive>

Once the first files got archived browse the catalog of archived files going to **Restore** in the top row followed by selecting **Archive** in the left column.